

<p>Programs Manager, Bentley Education</p> <p>Bentley System</p> <p>www.bentley.com</p> 		 <p>FACULTAD DE GEOGRAFÍA E HISTORIA</p>
	 <p>UNIVERSIDAD COMPLUTENSE MADRID</p>	

Estudiantes

Instrucciones para registrarse en Bentley Education (empresa Bentley Systems) y descargar el software para su ordenador personal.

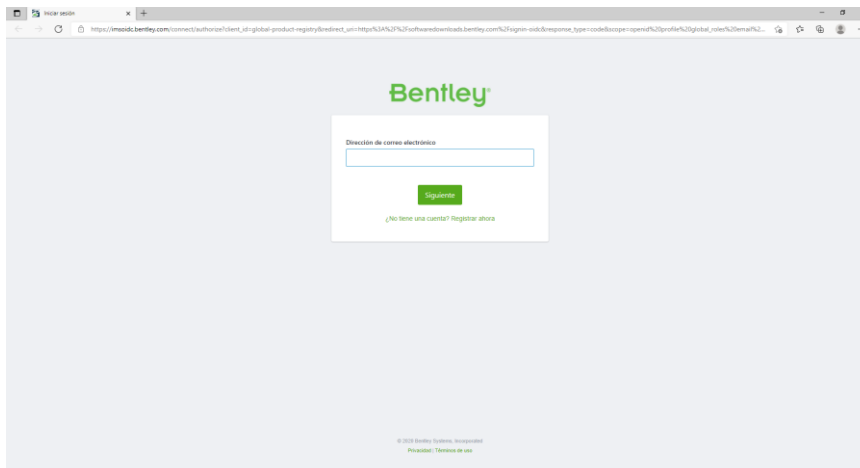
Una vez que el Administrador ha añadido (o ha dado de alta) a los estudiantes en el portal de Gestión de Usuarios de Bentley, cada estudiante puede acceder a cualquiera de estas dos páginas.

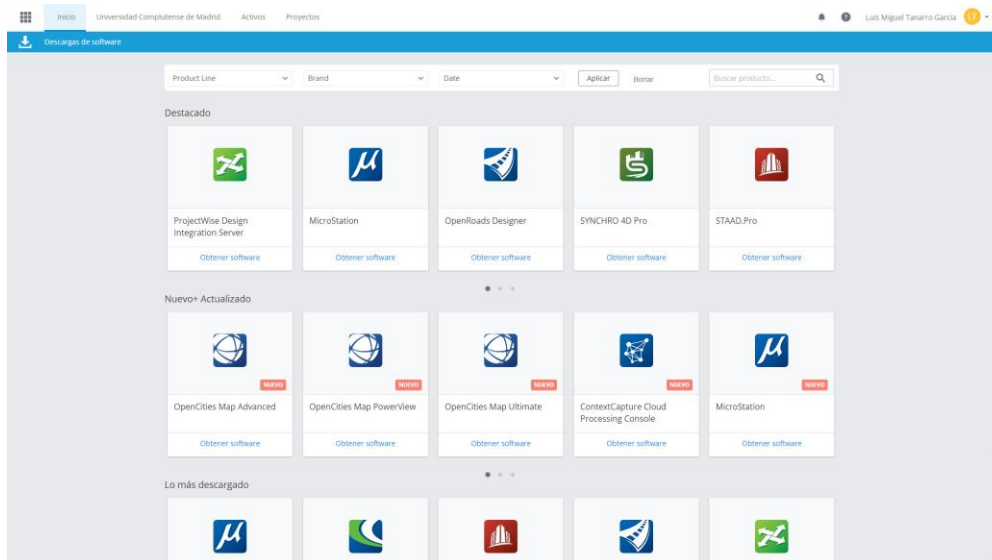
Al acceder a cualquiera de los portales con el correo institucional (@ucm.es) será el momento de registrarse.

1. [Software Downloads Page](#) – En esta página se pueden descargar todas las soluciones incluidas en la suscripción académica perteneciendo a la Universidad Complutense de Madrid.
2. [Bentley Education](#) – En esta página se pueden descargar todas las soluciones incluidas en la suscripción académica perteneciendo a la Universidad Complutense de Madrid.

Los estudiantes pueden acceder a ambas páginas con sus credenciales (correo electrónico institucional -@ucm- y contraseña personal).

1. [Software Downloads \(bentley.com\)](#)





2. Bentley Education (<https://education.bentley.com/>). “Log in”

GET A
JUMP START
ON YOUR INFRASTRUCTURE CAREER

Unplug limitless possibilities and make your dreams come true

Your future career is waiting. Students and educators now have free access to Bentley's software used by companies around the world to create amazing infrastructure projects. Get community access to network with professionals and other students from around the world and learn everything you need for an exciting career!

Bentley

Dirección de correo electrónico

Siguiente

¿No tiene una cuenta? Registrar ahora

Unplug your limitless possibilities

Students and educators get full access to learning licenses of Bentley applications. To confirm your eligibility, log in using your institutional email address. If you don't have one, log in with an alternative email id and validate your eligibility by uploading your student/educator ID card.

Choose Product Line

Modeling and Visualization 4 [Learn More](#)

MicroStation

MicroStation is used by engineers, architects, GIS professionals, constructors, and owner-operators to design, model, visualize, document, map, and sustain infrastructure projects because it delivers an integrated and proven suite of intuitive, interactive, and highly interoperable design capabilities.

[DOWNLOAD](#)

MicroStation PowerDraft

MicroStation PowerDraft is a professional-level application used for the production of 2D/3D drafting and detailing. It provides an intuitive interface for creating, editing, and manipulating drawings and models in DGN or DWG format.

[DOWNLOAD](#)

Bentley LumenRT

With LumenRT, complement your designs using a comprehensive set of tools for building natural 3D environments around your projects. Quickly create images, videos, and real-time presentations that efficiently convey your design intent.

[DOWNLOAD](#)

<https://education.bentley.com/Products>

A. Software Bentley installed in computer labs (aulas de informática de la Facultad de Geografía e Historia -UCM-)

- **MicroStation CONNECT.**

- Versión instalada en el aula de informática (MTIG):
MicroStation CONNECT Edition (Full) x64 (SES) Update 15 (English)

Versión más actual:

MicroStation 2023 (SES) (English). Versión:23.00.01.44. Fecha:09/27/2023

Descargas de software | Product Details

MicroStation

MicroStation is used by engineers, architects, GIS professionals, constructors, and owner-operators to design, model, visualize, document, map, and sustain infrastructure projects because it delivers an integrated and proven suite of intuitive, interactive, and highly interoperable design capabilities.

Generación	Versión	Idioma	Arquitectura	Tipo de entregable	
CONNECT Edition	23.00.01.44	English	x64	Installer	Aplicar Borrar

MicroStation 2023 (SES) (English)

Versión:23.00.01.44	Fecha:09/27/2023	Tamaño:2 MB	Requisitos del sistema	Estado de soporte	Descargar
---------------------	------------------	-------------	------------------------	-------------------	---------------------------

Información

MicroStation 2023.1 (Full) x64 (SES) (English)

MicroStation is modeling, visualization, and documentation software for professionals who design, deliver and operate the world's infrastructure. Focus on design with better integration of information and teams made possible by MicroStation's interoperable and scalable platform. Realize design freedom with robust and extensive modeling capabilities. Communicate designs clearly with stakeholders using intelligent deliverables production and the power of Bentley Cloud Services.

For additional information on system requirements see the [Read Me](#) document and [Installation Guide](#).

Subscription Entitlement Service:

This product version utilizes Subscription Entitlement Service (formerly CONNECT Licensing), which is not supported by SELECT activation key(s). Subscription Entitlement Service features new behavior to enhance your organization's user administration and security with mandatory user sign-in via CONNECTION Client to access the application. If you are already signed in to the CONNECTION Client, you have met this prerequisite. If you have not, please refer to the [Administrator's Resource Center](#) and/or contact your administrator for assistance in the registration and sign-in process.

- **ContextCapture (ahora renombrado como iTwin Capture Modeler)**

Versión actual:

iTwin Capture Modeler 23.00.02.84. Fecha:09/28/2023 Tamaño:3134 MB 2023 (SES) (English).

Descargas de software | Product Details

iTwin Capture Modeler

iTwin Capture Modeler is a desktop software to produce high-resolution reality meshes of a subject, based on pointclouds or photographs taken from different viewpoints.

Generación: CONNECT Edition | Versión: 23.00.02.84 | Idioma: English | Arquitectura: x64 | Tipo de entregable: Installer

iTwin Capture Modeler 2023 (SES) (English)

Versión: 23.00.02.84 | Fecha: 09/28/2023 | Tamaño: 3134 MB | Requisitos del sistema | Estado de soporte

*Borrar los filtros predeterminados para ver más descargas

Información

iTwin Capture Modeler is a 3D surveying and mapping desktop software designed to produce high-resolution reality meshes of a subject, by using pointclouds or photographs taken from different viewpoints.

This edition of iTwin Capture Modeler enables parallelization on up to 2 Modeler engines.

Update 2023.0.2

- iTwin Association:
 - New iTwin Asset association possible for iTwin Capture Modeler projects
 - New UI with Recent, Favorite and Search filtering
- Upload of reality data:
 - Improved robustness
 - Added Retry possibilities for failure cases
- Feature extraction:
 - Added 2D polygons display for cracks and spalling in Result view
 - Improved cracks, spalling and corrosion 3D geometric processing

- **Versión instalada en aula de informática (MTIG):**

ContextCapture CONNECT Edition x64 (SES) Update 18 v10.18.0.232 (English)

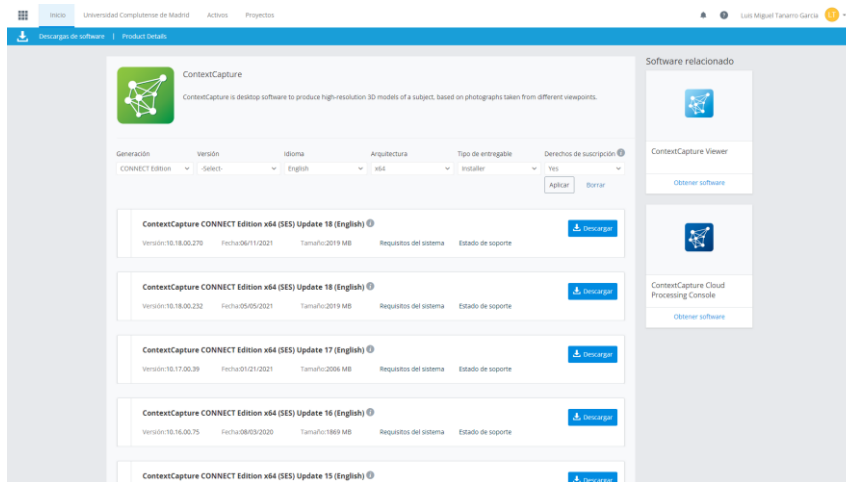
Información

iTwin Capture Modeler is a 3D surveying and mapping desktop software designed to produce high-resolution reality meshes of a subject, by using pointclouds or photographs taken from different viewpoints.

This edition of iTwin Capture Modeler enables parallelization on up to 2 Modeler engines.

Update 2023

- ContextCapture 2023 renamed iTwin Capture Modeler
- Job queue management optimized for large number of engines
- Sharing of photo orientations: fixed issue when some photos were removed from the block



Información



ContextCapture

Software solution that allows the production of high resolution 3D models, orthophotos, digital surface models and point clouds, from simple photographs and/or lidar point clouds, without any human intervention. ContextCapture solves this problem with cutting edge photogrammetry, computer vision and computational geometry algorithms fulfilling industrial-quality requirements in terms of precision, scalability, efficiency, usage, robustness and interoperability. ContextCapture can produce reality data in suitable formats for usage in iTwin applications, in 3D GIS applications and for most 3D applications.

It integrates automatic detection capabilities, using machine learning, to detect 2D and 3D objects in photos and 3D models, to classify point clouds and to segment meshes and orthophotos

This edition of ContextCapture enables parallelization on up to 2 ContextCapture Desktop engines.

- **OpenCities Map Advanced**

- Versión instalada en el aula de informática:

OpenCities Map Advanced CONNECT Edition x64 (SES) Update 7 (English)

OpenCities Map Advanced

OpenCities Map Advanced adds mapping workflows by extending MicroStation's capabilities. It does so by extending DGN format with feature-based modeling and by supporting spatial databases. OpenCities Map Advanced improves access to information by centralizing all your data in a single location. The learning curve is virtually nonexistent for MicroStation users who want to switch from file-based to spatial database-based mapping.

Generación	Versión	Idioma	Arquitectura	Tipo de entregable	
CONNECT Edition	23.00.00.123	English	x64	Installer	Aplicar Borrar

OpenCities Map Advanced 2023 (SES) (English) [Descargar](#)

Versión: 23.00.00.123 Fecha: 08/03/2023 Tamaño: 2 MB [Requisitos del sistema](#) [Estado de soporte](#)

Información



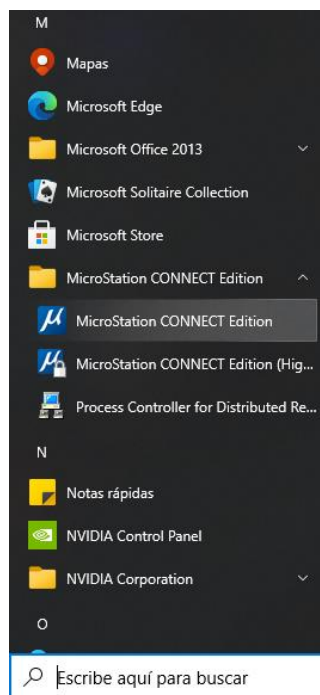
OpenCities Map Advanced 2023 is designed for users that need to create, edit, manage, and analyze spatial databases. It is based on the MicroStation 2023 and takes advantage of all of its capabilities. Custom applications can be developed using the OpenCities Map API.

B. Recommendations for the use of Bentley products in computer labs (aulas de informática)

- In computer labs students can use their personal credential (or administrator credential) to access programs (MicroStation, ContextCapture, OpenCities Map, etc.)

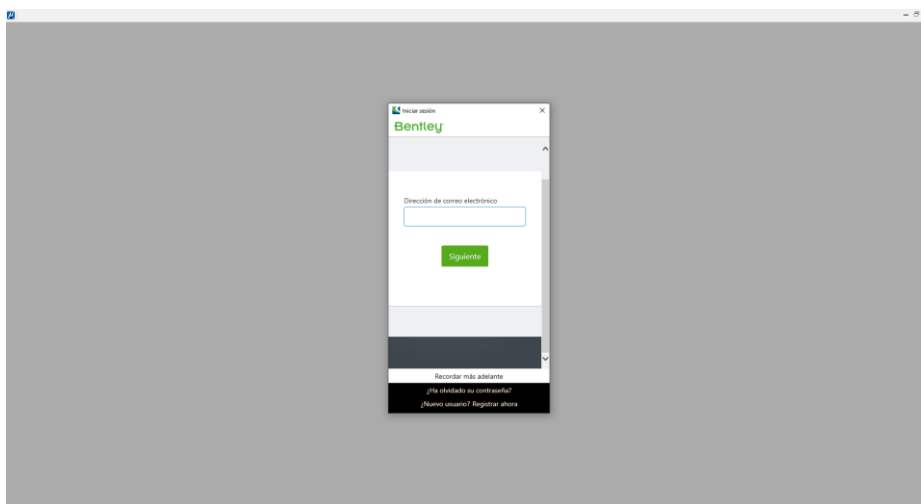
- **Open session, running a program.** The student can also directly open a program (for example MicroStation), but before opening it will ask for the credential (email and password).

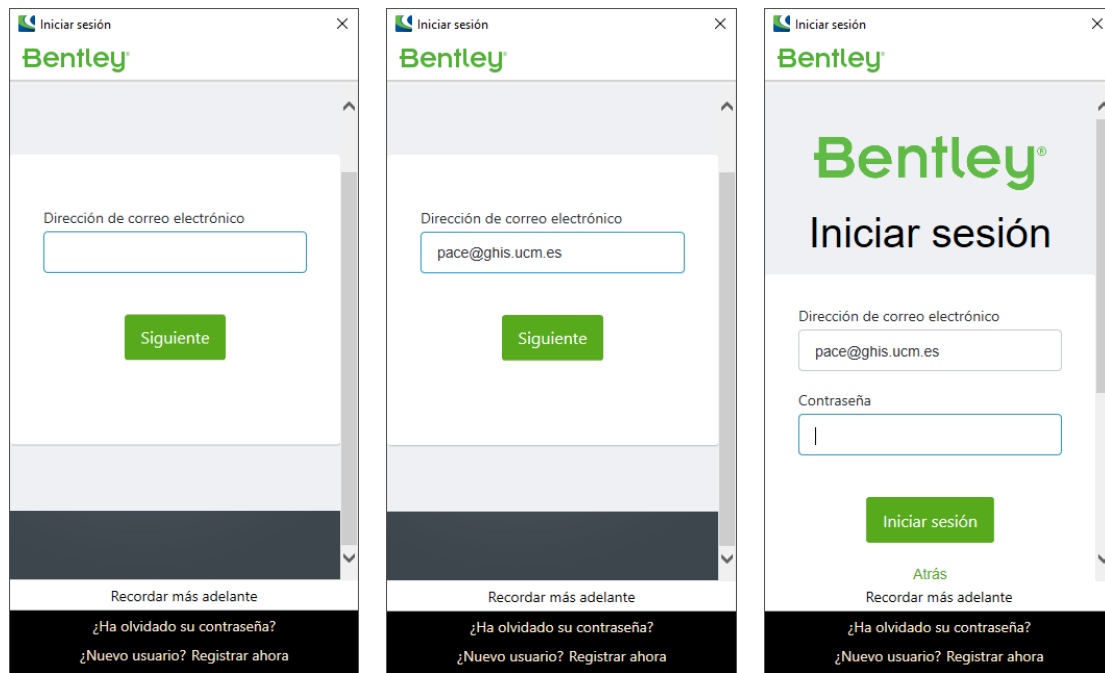
- Reopen MicroStation CONNECT and / or any other software that will be used. Two options:



Double click on the icon

Programs/MicroStation CONNECT Edition/ *MicroStation CONNECT Edition*



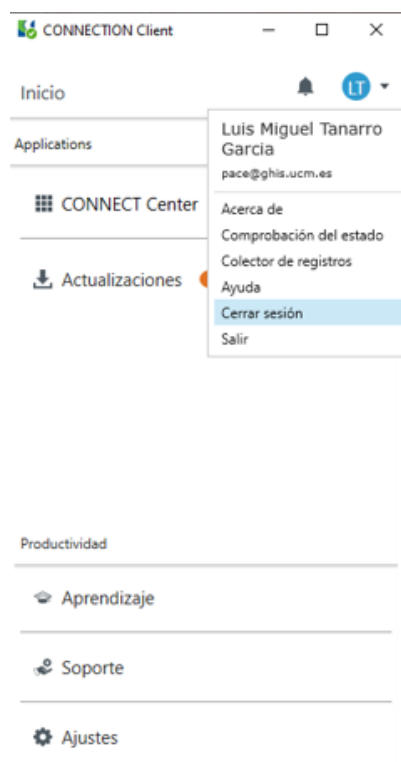


- At the end of the session, students have to close the programs and *log out* of the Bentley account, using the same email.

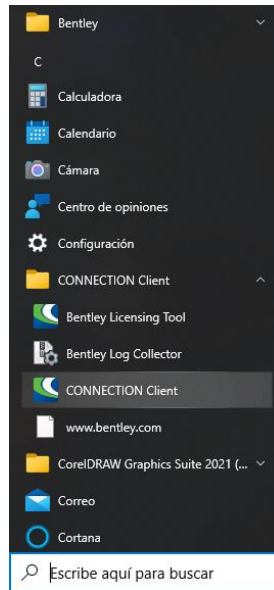
For example:

- **Close session.** Close MicroStation CONNECT and any other Bentley products in use.

- Log out of the CONNECTION Client



Open session. Log in again to the CONNECTION Client (using your e-mail in the user management portal). Two options:



Double click on the icon

Programs/CONNECTION Client/*CONNECTION Client*